

THE 2026 ANNUAL PARISH ASSEMBLY OF THE PARISH OF WINCHFIELD

AGENDA

- 1. Apologies**
- 2. To confirm and sign the minutes of the Annual Parish Assembly held on 19 May 2025**
- 3. Chairman's Report**
- 4. Financial Report for the year ended 31 March 2026**
- 5. Community Safety**
- 6. Community Projects and Events**
- 7. Local Government Reorganisation, Devolution and HDC Local Plan**
- 8. Open Forum**

Chairman's Report

Chairman's Report

Welcome to Cllr Richard Quarterman and our thanks to Tim Davies

We are financially sound and provisions made for the future, but we may need help

Community Safety - significant improvements have been achieved and new projects approved

Community Projects and Events – our investment in village life

We face new challenges as a village with Devolution, Local Government Reorganisation, and the update to the HDC Local Plan

We want to hear from you in the Open Forum

Financial Report

Actual Receipts and Payments for y.e. 31 March 2026

	£'k	£'k
Receipts		
Precept	33.3	
Solar Farm Income	3.2	
PPC Group - SID donation	2.0	
s106 for bench	0.4	
VAT refund	2.2	
Interest	<u>1.5</u>	
		42.7
Payments		
Running costs	(9.1)	
Planning/NDP	0.0	
Grants/Donations/Events	(5.0)	
Community Benefit Fund	(5.1)	
Community Project Fund	(4.4)	
Repairs & Maintenance	(1.1)	
VAT	(1.8)	
		(26.4)
Movement in year		<u>16.3</u>
Opening reserves		65.5
Movement in year		<u>16.3</u>
Closing reserves		<u>81.8</u>

- Income in line with 2024/25
- Donation gratefully received from PPC Group in December 2025 towards the cost of a new Speed Indicator Device
- Expenditure lower than prior years by £6k
- The reduction was primarily due to lower expenditure from the Community Benefit Fund and which was unusually high in 2024/25 due to cost of improvements to footpaths.
- Financial situation strengthened as closing cash position increased by £16.3k to £81.8k

WPC Budget for 2026/27

- Budget approved at January 2026 meeting
- The precept for 2026/27 was increased by 1.39% of £1.35 for a Band D household. Materially lower than the government’s measure of inflation of 3.6% for the year to December 2025.

Budget expenses 2026/27	£'k
Running cost	9.5
Planning/NDP	18.0
Grants and Donations	4.3
Events	1.5
Community Benefit Fund	3.2
Community Project Fund	1.5
General Reserve	0.0
Other	1.0
Total	<u>39.0</u>

- Budgeted expenses in line with prior year at £39k
- A further £18k added to the Planning Fund to be used to challenge and influence any development proposals. The fund now stands at £59k.
- General reserves remain in line with auditor’s guidance so nothing more to add this year
- A further £4.7k added to the Community Project/Benefit Funds for community projects within Winchfield

WPC Community Project Funds

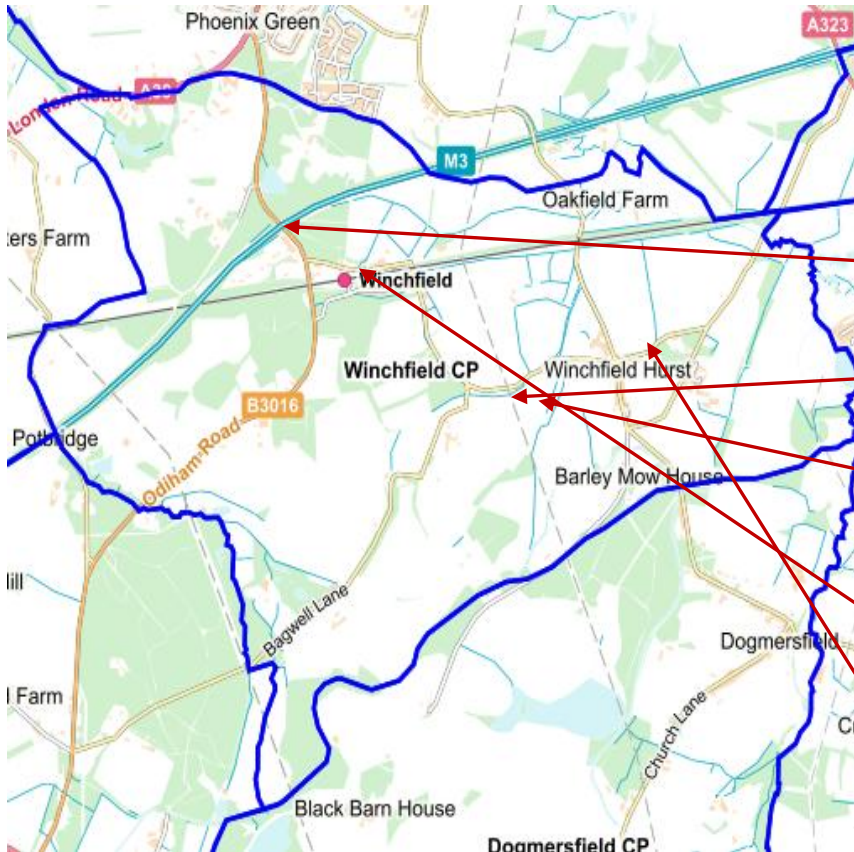
- Specific reserves are available for investment in community projects – Community Funds held by WPC (below)
- At April 2026 the Community Project and Community Benefit Fund total £24.5k
 - Community Benefit Fund has £13.8k available. The annual annuity of £3k per year from the Oakfield solar farms continues until December 2030
 - This fund is available for “charitable, educational, environmental and amenity purposes... where possible for promotion of sustainable energy and uses....not for political, religious or entertainment and hospitality purposes”
 - Community Project Fund, established in 2023, has £10.7k in reserves. Relative to the Benefit Fund and s106, there is greater flexibility over how Project Funds may be invested

Section 106

- The Section 106 funds held by Hart District Council and available to fund capital projects in Winchfield that have demonstrable leisure and community benefit, have now all been committed.
- In the year, the WPC supported the Winchfield Festival Committee's application to fund remedial works to the field next to the Barley Mow to make it more usable for community events and the Parochial Church Council's application for a composting loo at St Mary's Winchfield.
- The remaining balance of c.£900 is to be used to fund the purchase of two benches within the Parish.
- Many thanks to the residents of Winchfield in finding projects over the last few years to use these available funds to finance projects that will benefit of the community.

Community Safety

Highways – Maintenance



WPC continues to have a good relationship with HCC Highways

Last years outcomes:

- B3016 drainage clearance & jetting throughout winter & autumn.
- Eroded verges along Station Road reinstated.
- Potholes along Station Road.

Planned HCC tasks:

- Flooding on Station Road under the railway bridge.
- Flooding on Pale Lane near Winchfield Court.

Report potholes at fixmystreet.com or via HCC website

Speed Indicator Device

- Our new SID was introduced in January and will rotate between our five locations along Station Road.
- Our original SID remains at the Barley Mow and rotates on a semi-permanent basis.
- Data continues to show an average **speed reduction of 4–5 mph.**
- **85th percentile speed** is falling, with drivers generally traveling **3–4 mph slower.**



Proposed changes to the Barley Mow Junction



- Proposed changes to the junction at Pale Lane / Chatter Alley.
- The aim is to extend the Pale Lane give way lineage to give greater visibility splay in both directions.
- HH have approved the CFI application and is currently in the process of scoping the project which will include the design & cost projections.
- A full public consultation of the proposal will be conducted once the outline design has been approved by WPC.

B3016 Speed Reduction Campaign

Finally, a highways success story!!

- Our campaign with Hampshire Highways for a speed reduction on the B3016 has been successful!

40

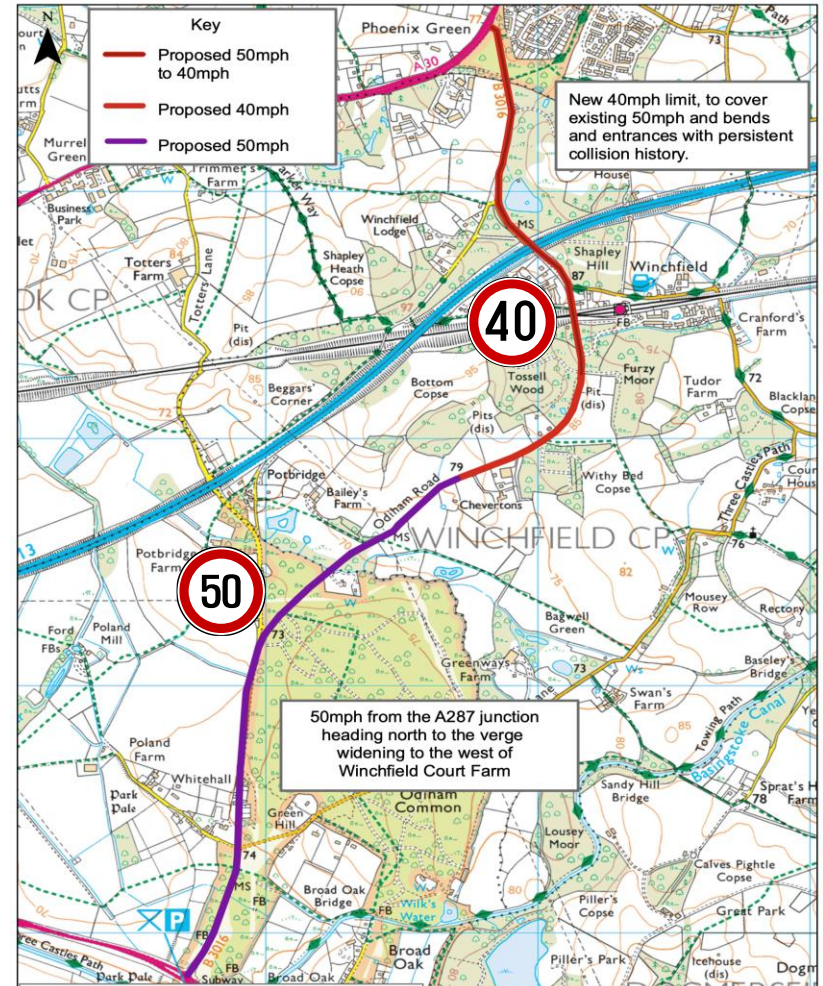
Proposal:

Reduce the current 50mph section to 40mph, and extend it to beyond Dignity, Winchfield Logs and Chevertons Farm.

50

Reduce the remaining section of the B3016 to 50 mph.

- We will be able to install a SID along the 40mph section to further discourage speeding.



Defibrillators

LIFE SAVING Winchfield
CPR & DEFIBRILLATOR
TRAINING

MONDAY 23RD MARCH
AT 6PM
WINCHFIELD VILLAGE HALL

LEARN LIFE SAVING SKILLS:

- How to perform CPR
- How to use a defibrillator
- Gain basic life support skills

SPACES ARE LIMITED
TO SECURE YOUR SPACE PLEASE EMAIL
clerk@winchfieldparishcouncil.gov.uk

TRAINING HAS BEEN FUNDED BY WINCHEFIELD PARISH COUNCIL

- There are 8 defibrillators located across Winchfield.
- WPC has organised and funded 6 training events over the last few years, with the most recent held in March.
- There are now circa **80** individuals from the village and beyond trained in CPR and life saving support skills.
- Another training event is being planned for later this year.

Thank you to all our guardians who regularly check that each device is working correctly.

Community Projects & Events

Winchfield Community Choir

We formed in 2024 and our aim is to foster a sense of belonging, enjoyment and social connection through music. We provide a space for people to meet, connect and build relationships across Winchfield and the surrounding villages.

We encourage individuals of all skill levels and voice parts to enjoy the experience of singing together which promotes good mental and physical health to our members.

We contribute to local celebrations and charity events.



St Mary's Church Winchfield presents

Spring into Summer Concert
Winchfield Community Choir

Join us for an entertaining light hearted and varied programme of music.
Conductor: Denny Davies
Accompanist: Hazel Rowley

Date: Saturday 3rd May 2025 | 7pm
at St Mary's Church, Winchfield
(Bagwell Lane, RG27 8DB)

Cost: **£12.50**
includes wine or soft drinks and canapés

Proceeds in aid of church roof

 Please Scan QR code for more info and to book

Buy tickets for this event from St Mary's, Winchfield
website <https://www.stmaryswinchfield.org.uk/ticketshop.html>

Santa's Grotto

23 children attended with parents and grandparents. We had a crafty corner, party, disco, games and of course the highlight- meeting Santa!



Women of Winchfield WOW



Easter Egg Hunt



Children attended with parents and grandparents to join the Easter Bunny on the Hunt!



SPACE FOR NATURE

Join us for Winchfield community mapping walk

Saturday 7th June 2025 - 10.30am

The walk will be led by Katy Gary, Senior Community Development Officer from the Hampshire and Isle of Wight Wildlife Trust

On the walk we will:

- Identify existing wildlife habitats and species
- Locate areas for improvement and habitat creation

The walk will be starting at Winchfield Village Hall

Email: winchfieldparishclerk@outlook.com to sign up to join the walk. Everyone welcome!



CONNECTING NATURE ACROSS YOUR COMMUNITY

www.greening-campaign.org

Space for Nature

Winchfield Community Mapping Walk took place in June

Keep safe and enjoy time in Nature

Be Tick aware

Name: Tick
Home: Grassland, woodland, parks, heath, & some gardens
Disease: Some carry Lyme Disease or Tick Borne Encephalitis
Size: From pin-head to baked bean

We look like Beans with legs
We are amazing creatures that are part of our magical wildlife world

Being in nature is safe & fun if you are 'Tick Aware'.
1) Wear long sleeves, and tuck trousers into socks
2) Unhook us when we cling on!

Keep to footpaths
Make checking for ticks fun for children - Sing the song 'Head, shoulders, knees and toes'
Check dogs & cats

How to unhook a Tick
During your walk: brush down clothes regularly
After being outside: Check all over your body

Slide under tick
Carry a Tick Remover
Visit Lyme Disease Action
Turn ANTI-clockwise & remove

www.greening-campaign.org

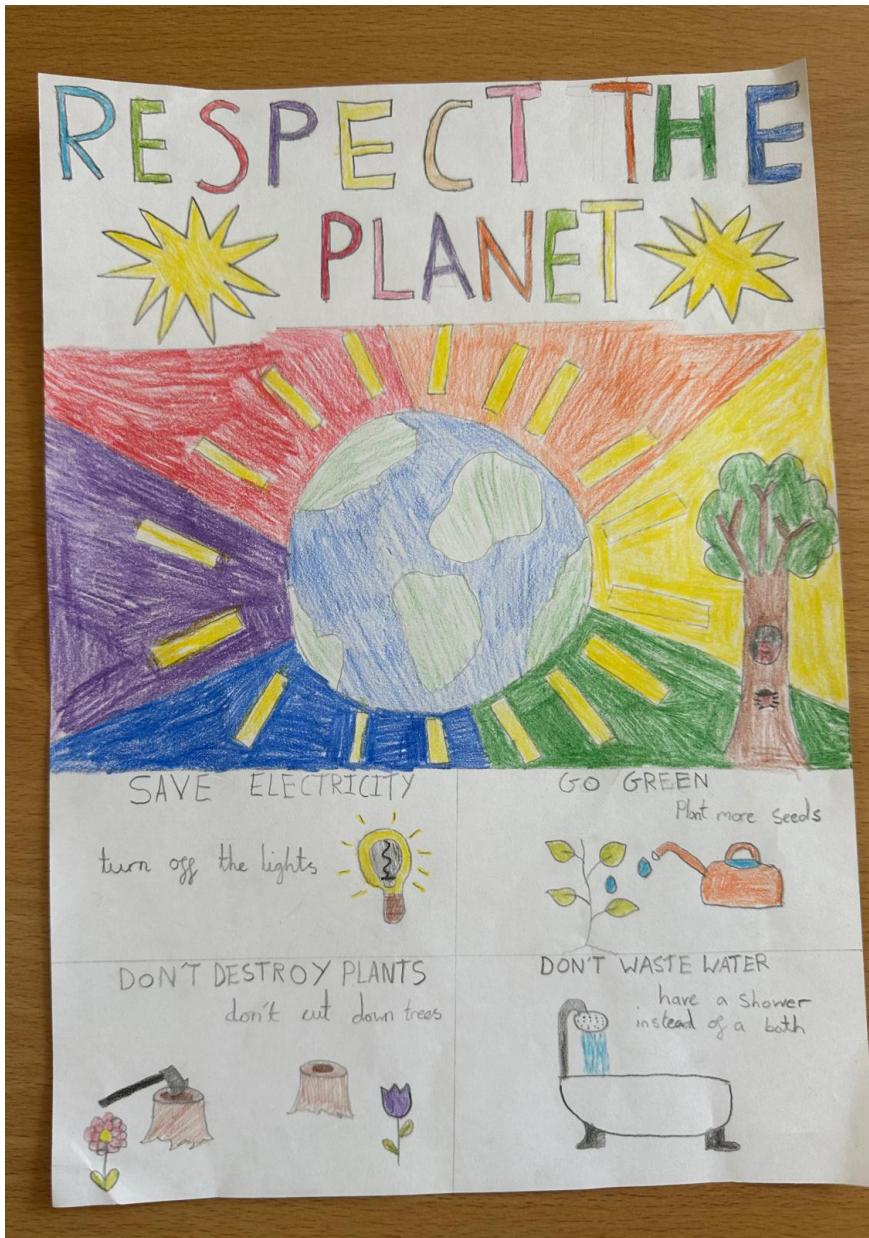


Plant Swap



Waste Prevention

Encouraging waste prevention and recycling by working with children at the local school on posters.



Cycle of the Seed

Encouraging growing local and supporting insects by building and installing planting boxes accessible to all.





Winchfield Village Fete

.....♥.....

SATURDAY 20TH JUNE

≡ **2PM TO 5PM** ≡

BARLEY MOW PUB RG27 8DE

- 
- GAMES
 - KIDS ACTIVITIES
 - FACE PAINTING
 - TUG OF WAR
 - FOOD VENDORS
 - TOMBOLA
 - SWEET STALL
 - MUSIC

Family Fun
≡ *for all.* ≡

—♥—

AND LOVELY LOCAL
STALL HOLDERS
IN ATTENDANCE.

≡ **ADMISSION FREE** ≡

—♥—

SUPPORTED BY WINCHFIELD PARISH COUNCIL —♥—



**Local Government Reorganisation,
Devolution
and HDC Local Plan**

Devolution – what is it

The transfer of powers and funding from national to local government to enable more decisions to be made locally, helping regions to shape their own future.

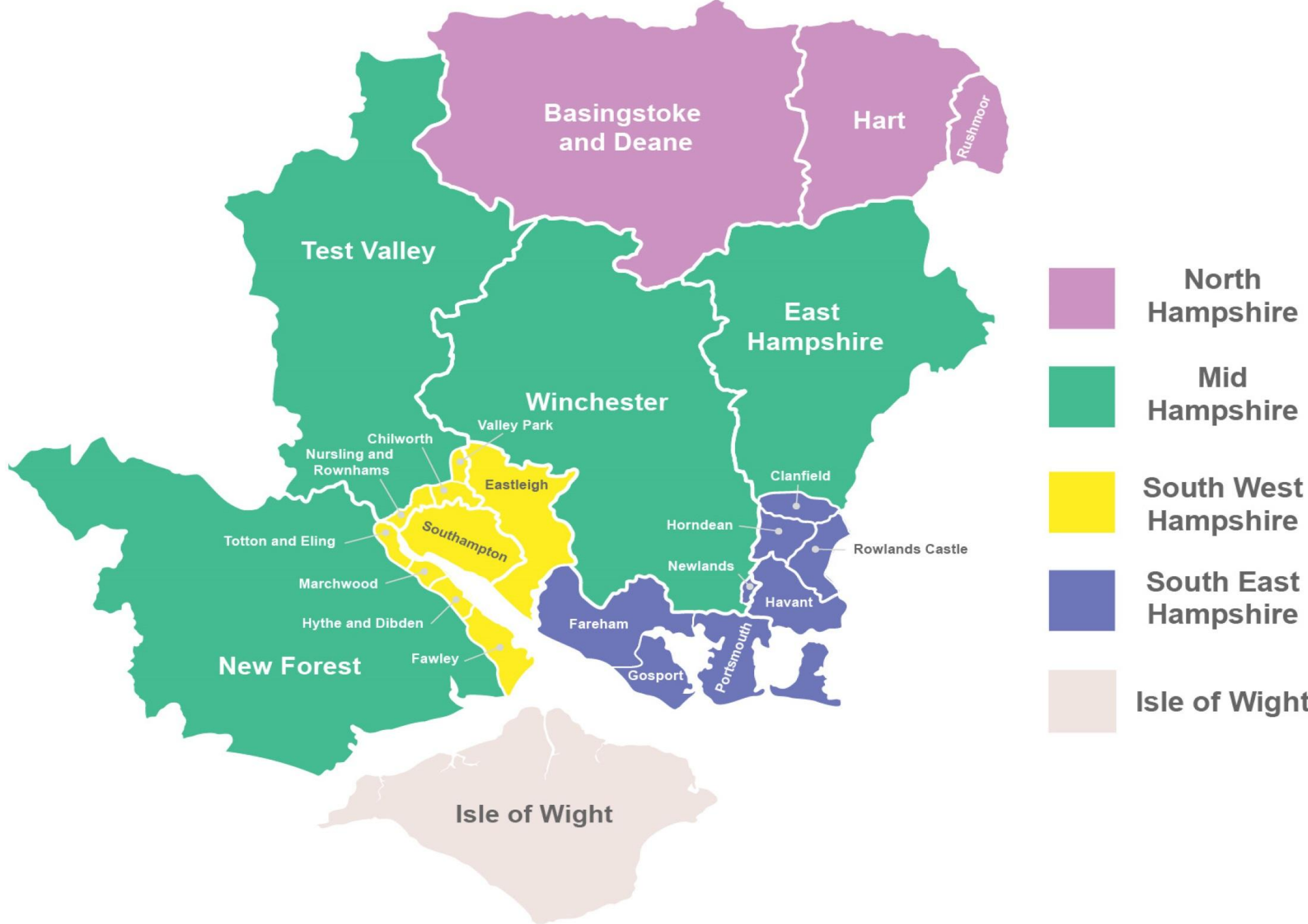
Once established, in 2028, the Hampshire and Solent Combined County Authority will receive new powers and funding from central government. Decisions about key regional priorities will be local:

- Transport and connectivity
- Skills and employment support
- Housing and strategic planning
- Economic development
- Energy
- Public safety

A Mayor will be elected to head up the new Authority in 2028.

Local Government Reorganisation

The Government is planning to replace all two-tier systems - where services are split between County and District or Borough Councils - with new Unitary Councils. It means the County and District Councils will no longer exist and brand-new organisations will be created.



Please note: The boundaries shown on this map are illustrative and not to scale. They are intended as a visual guide only and may not accurately represent exact geographic borders.

What happens next?

- The Government will legislate to establish the new single tier of local government and make provision to abolish councils.
- Elections for the new Hampshire and Isle of Wight unitary councils will take place in May 2027
- After the elections, a shadow council will be set up as a temporary body made up of the newly elected councillors.
- Its role is to prepare for the launch of the new councils in April 2028, agree budgets, policies and governance arrangements
- Until then, HCC and the existing 14 district, borough and unitary councils will continue to run all day-to-day services.
- Mayoral election in May 2028 and the creation of the Hampshire & Solent Mayoral Combined County Authority responsible for strategy and collaboration, not local service delivery,

HDC Local Plan 2028 - 2044

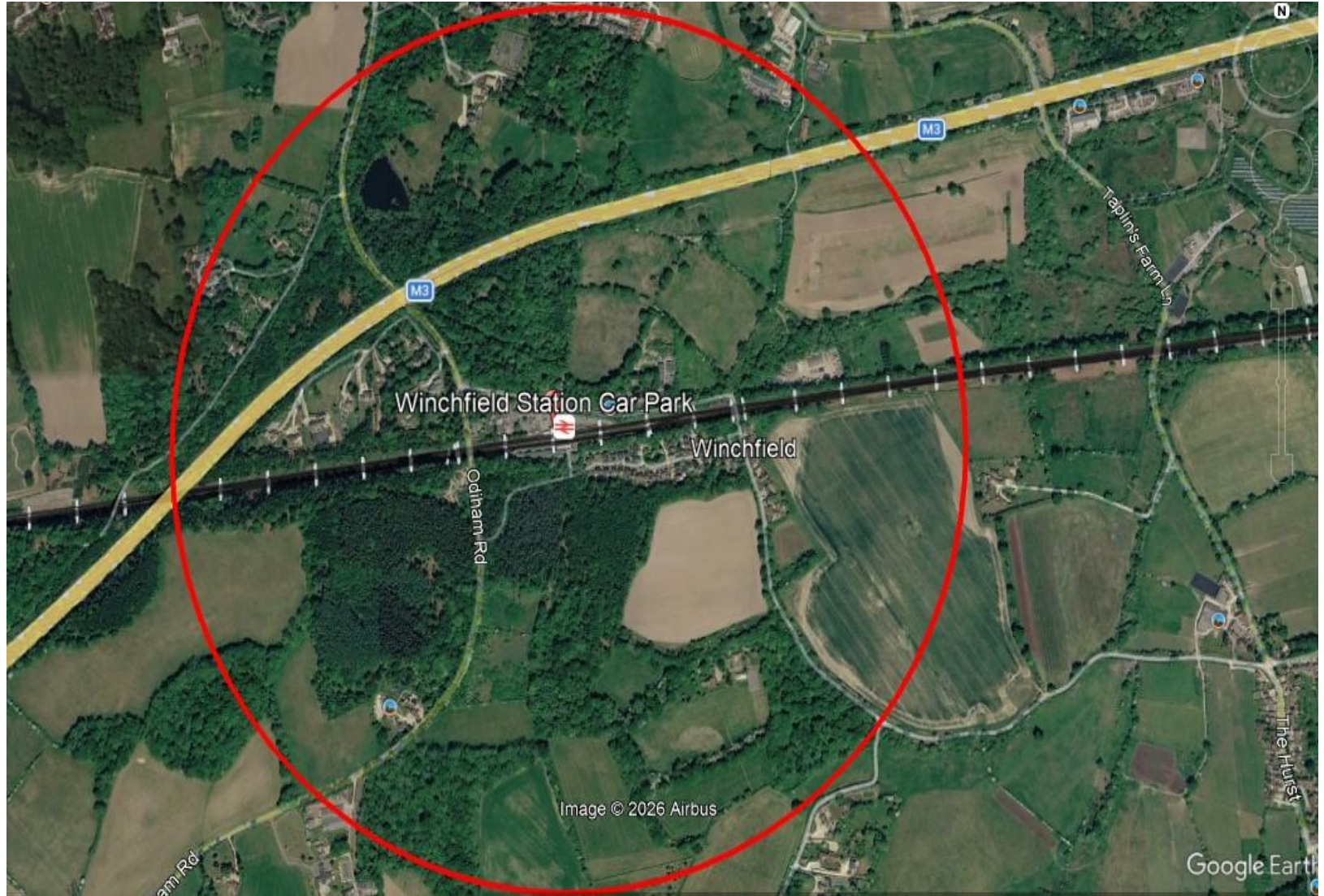
Update

**To deliver 15,000 houses in the
next 20 years**

NPPF - potential issues – to be published

- **Strategic Planning Authorities responsible for Spatial Development Strategy**
- **Permanent presumption in favour of suitably located development**
- **Building homes around stations**
- **Driving urban and suburban densification**
- **Support for rural social and affordable housing**
- **Supporting small and medium sites**
- **Payments into a nature restoration levy as alternatives to appropriate assessment**
- **Concept of Valued landscapes - absent**
- **More positive approach to heritage assets**

What it could mean for Winchfield



HDC Local Plan timetable 2026 – 2028

Notice of intention to commence plan preparation : 29 Apr 26

Scoping consultation : 27 May 26 – 19 Jun 26

A public consultation to seek views from stakeholders on the scope of the Plan and how they wish to be engaged. A summary of the consultation and responses received will be published

Gateway 1 : 30 Sep 26

HDC will publish a self-assessment summary demonstrating readiness to prepare a sound Local Plan. This milestone formally marks the start of the 30-month plan preparation period

Consultation on Plan content and evidence : 19 Oct 26 – 30 Nov 26

First formal consultation. Views will be sought on the Plan's draft vision, proposed spatial strategy and the evidence gathered to date. A summary of the consultation and of responses received will be published.

HDC Local Plan timetable 2027

Gateway 2 : 30 Jun 27 – 30 Jul 27

HDC will meet with the Planning Inspectorate to identify and resolve potential soundness issues and to ensure that the Plan is on track to meet legal requirements. Once the Gateway 2 assessment is complete, the assessor's formal report will be published.

Consultation on the proposed plan : 3 Sept 27 – 29 Oct 27

The second and final formal consultation during the 30-month plan preparation period on the full draft plan and policies map. A summary of the consultation and of responses received will be published

HDC Local Plan timetable 2028

Gateway 3 : 3 Jan 28 – 29 Feb 28

The final assessment stage by the Planning Inspectorate to decide whether the Plan is ready for submission. The assessor's report, submitted documents and a Gateway 3 completion statement will be published.

Plan submission : 31 Mar 28

Subject to passing Gateway 3, the Plan and all supporting evidence will be formally submitted to the Secretary of State for independent examination.

Plan examination : 31 Mar 28 – 31 Aug 28

An Independent Inspector, appointed by the Secretary of State, will examine the Plan to determine whether it is sound and compliant with national planning policy.

Plan adoption : 31 Oct 28

The Plan will be considered for adoption by the future North Hampshire Council which will be vested on 1 April 2028. The Plan will form part of the statutory Development Plan for the new North Hampshire area.

HDC Plan updates

- Need to find sites for 15000 houses over 20 years
- Presumption in favour of sustainable development is resulting in early applications
- Will the likes of the “Shapley Heath” return – Murrell Green application for 2200 houses soon
- Secretary of State – new powers to “call in” proposals above 150 houses
- Keep any eye on the HDC Local Plan web page

WPC update

- WPC has a New Webpage for Planning Matters
<https://winchfieldparishcouncil.gov.uk/news/new-webpage-for-planning-matters/>
- Consultants appointed, initial meetings held, site visits completed
- Troy Planning appointed to assist with planning policy and drafting representations
www.troyplanning.com
- Stone & Meadow appointed to assist with landscape and heritage issues
www.stoneandmeadow.co.uk

WPC objectives re HDC Local Plan

- To ensure that the it is based on a thorough and balanced assessment of all sustainable options
- To focus and prioritise on a strategy of brownfield first and the intensification of settlements.
- To ensure that the heritage, key landscape, biodiversity, SSSI sites and ancient woodlands in Winchfield, are preserved.
- To ensure that dwellings proposed for Winchfield meet the design criteria specified in our Neighbourhood Plan
- To ensure that appropriate levels of infrastructure and services are defined and delivered in advance
- That full consideration is given to the physical constraints and limitations in and around Winchfield
- That WPC is engaged with HDC and any developer in an early dialogue regarding Section 106 contributions
- To engage and partner with neighbouring villages to formulate coordinated responses to proposals.

“right thing, for the right reasons, in the right place”

Murrell Green - new village

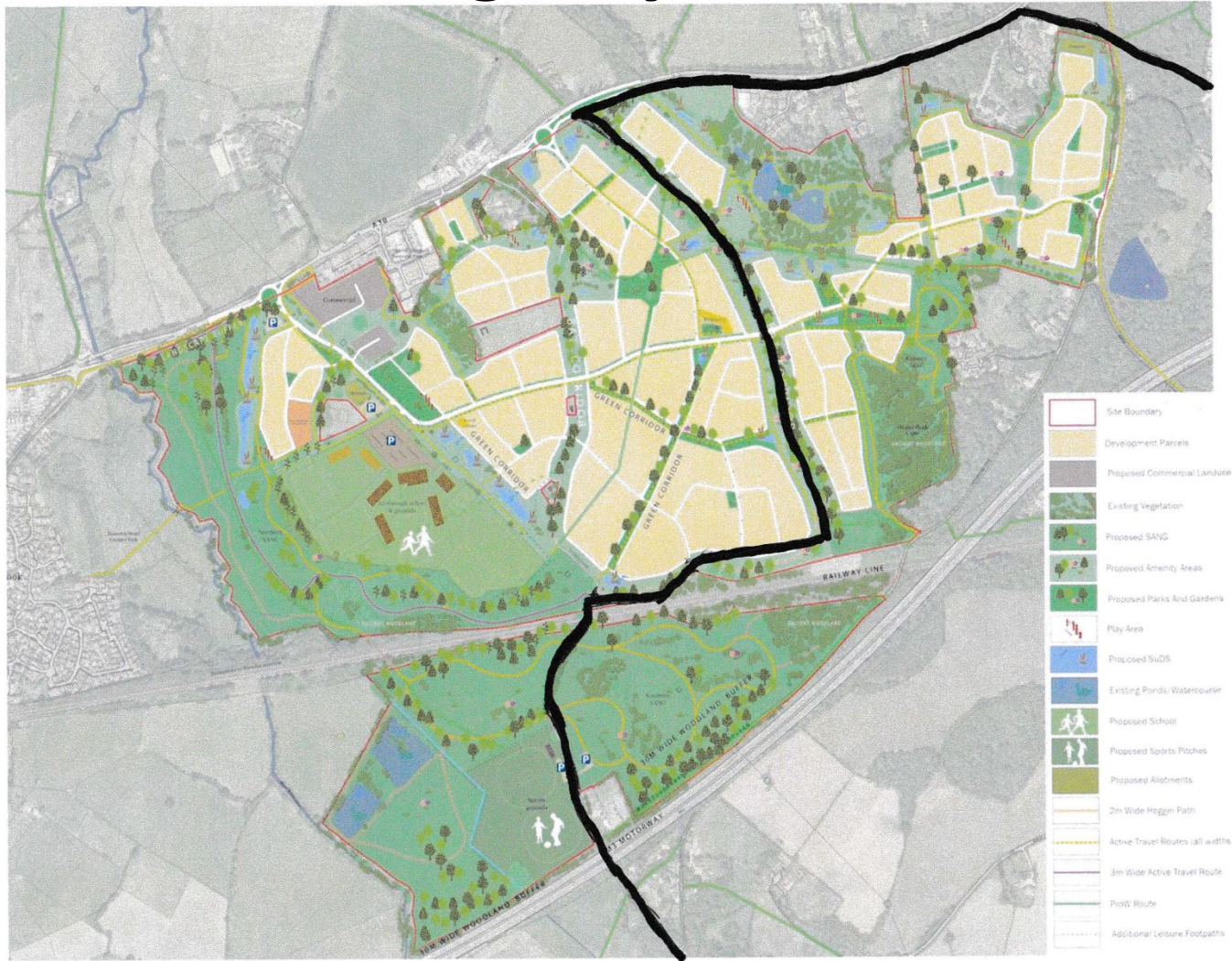
Lightwood Land

- Pegasus Group acting on their behalf
- Proposal for new village of 2200 homes at Murrell Green – up to 900 in Winchfield
- Public consultations held at Hook Community Centre and Winchfield Village Hall
- Planning application to HDC to follow soon

WPC response

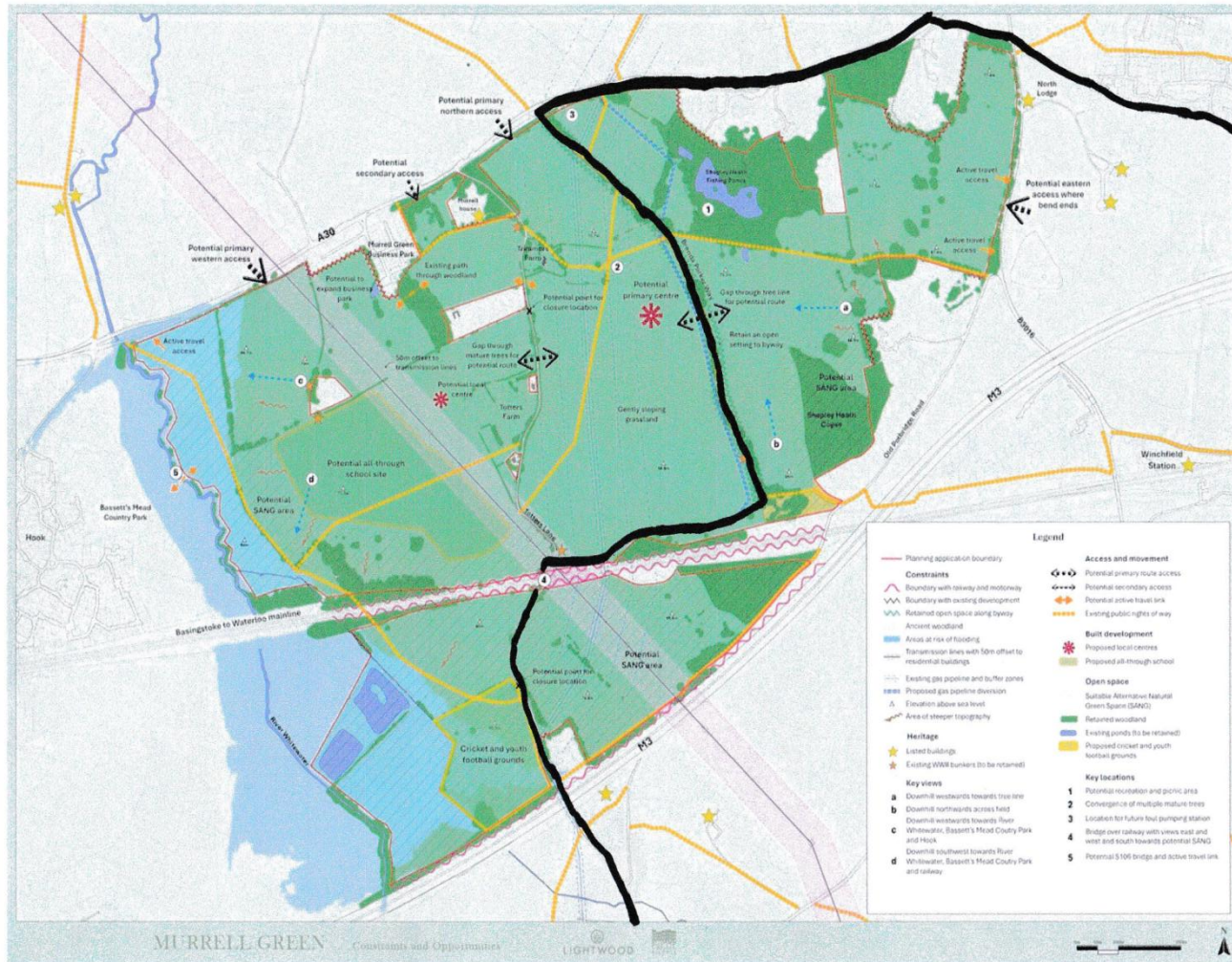
- Discussion in hand with Hook PC, Hartley Wintney PC and Odiham PC
- WPC held meeting with Lightwood
- WPC meeting regularly with our consultants
- WPC website will be kept up to date
- WPC to decided not to respond to the consultation – we will wait until a formal planning application is submitted to HDC

New village layout



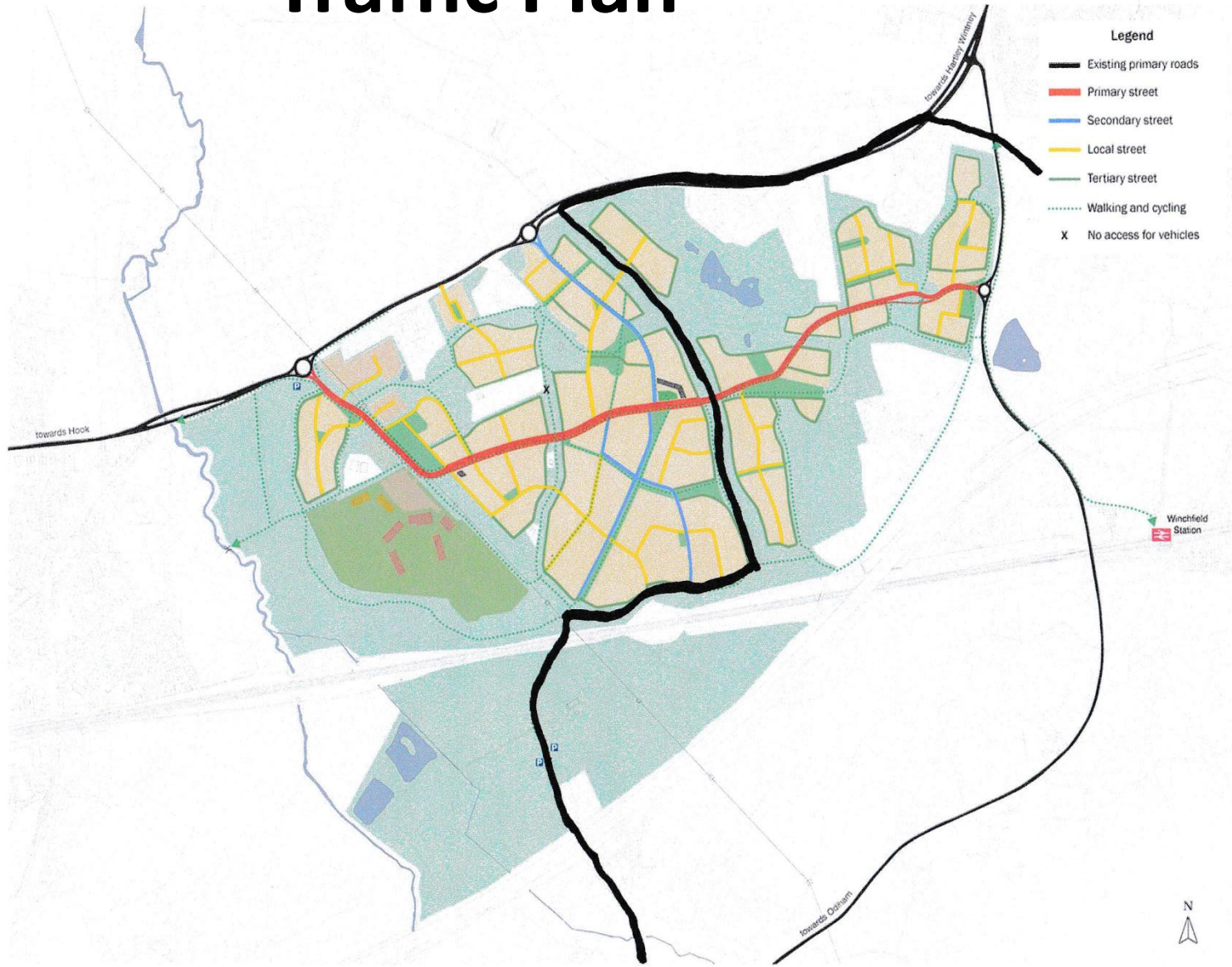
Winchfield/Hook parish boundary —

Landscape constraints



Winchfield/Hook parish boundary 

Traffic Plan



Winchfield/Hook parish boundary **————**

And finally

Please help us to look
after Winchfield now and
as we plan for the future
of the village.

Why become a Parish Councillor in 2027

Represent your community and introduce fresh ideas.

Involvement managed to the time you can make available

Life experience, everyday skills, commitment to people and our community are key

Council meets every two months, business is managed by e-mail and occasionally by a 'Teams' call.

WPC has an experienced Clerk who will advise and provide support.

Training courses on a variety of topics are available.

Contact the Clerk clerk@winchfieldparishcouncil.gov.uk or talk to us

Open Forum